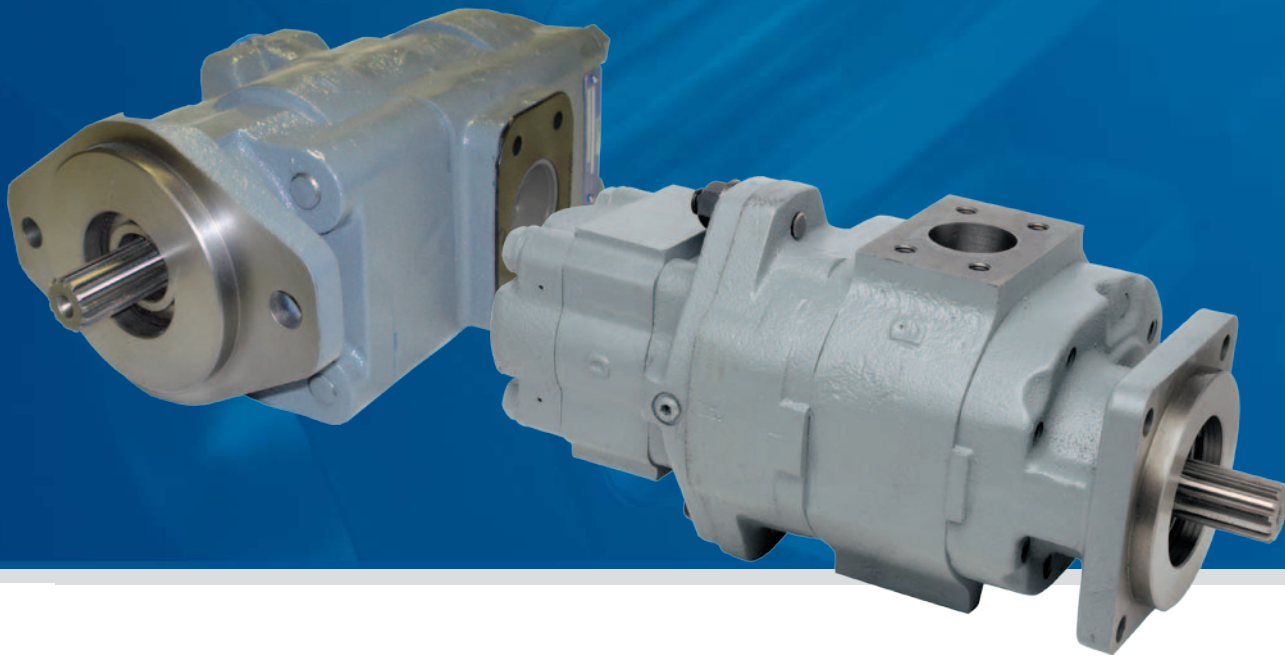


Replacement Units & Parts
GROVE®
PRODUCT LISTING

Your Source for High Quality Pumps & Components
for Grove® Equipment



General

Grove® Product Listing

Part #	Description
MB750FB-K	Front Bearing
MBMX750DS-K	Disc Springs
MBMX750RB-K	Rear Bearing
MX750ROTGRP	Cylinder Block, Piston Set, Valve Plate, Set Plate, Ball Guide & Shoe Plate
MX750FB-K	Front Bearing
MX750FP-K	Friction Plate
MX750S-A	Shaft without Brake
MX750SB-A	Shaft with Brake
MX750SP-K	Separator Plate
M92-0000517	PUMP
M21020 BRADEN	PUMP
M7-722-000006	PUMP
M7-722-000074	PUMP
M7-722-000088	PUMP
M7-722-000095	PUMP
M7-722-000067	PUMP
M7-722-000102	PUMP
M7-632-000032	PUMP
M7-632-000033	PUMP
M7-722-000108	PUMP
M7-722-000109	PUMP
M7-722-000111	PUMP
M7-722-000104	PUMP
M7-722-000075	PUMP
M7-632-000030	PUMP
M7-722-000936	PUMP
M7-722-000928	PUMP
M7-722-000913	PUMP
M7-722-000966	PUMP
M7-722-000994	PUMP
M7-722-001119	PUMP
M7-722-000896	PUMP
M7-722-000949	PUMP
M7-722-001073	PUMP
M7-722-001079	PUMP
M7-722-001106	PUMP
M7-722-001133	PUMP
M7-722-100015	PUMP

General

Grove® Product Listing

Part #	Description
M7-722-100030	PUMP
M7-722-100046	PUMP
M7-722-100099	PUMP
M7-722-000974	PUMP
M7-722-100025	PUMP
M7-722-1000069	PUMP
M7-722-000911	PUMP
M7-722-000897	PUMP
M7-722-000965	PUMP
M7-722-001047	PUMP
M7-724-000040	PUMP
M7-722-001121	PUMP
M7-722-990085	PUMP
M7-724-000043	PUMP
M7-722-000317	PUMP
M7-722-000347	PUMP
M7-722-000937	PUMP
M7-722-001130	PUMP
M7-722-000345	PUMP
M7-722-000939	PUMP
M7-722-001123	PUMP
M7-722-000933	PUMP
M7-722-100061	PUMP
M7-722-000919	PUMP
M7-722-001080	PUMP
M7-722-000917	PUMP
M7-722-000959	PUMP
M7-722-000342	PUMP
M9-722-001113	PUMP
M7-722-000933	PUMP
M7-722-000934	PUMP
M7-722-000001	PUMP
M7-722-000007	PUMP
M7-722-000012	PUMP
M7-722-000045	PUMP
M7-722-000049	PUMP
M7-722-000103	PUMP

General

Grove® Product Listing

Part #	Description
M7-722-000105	PUMP
M7-722-000106	PUMP
M7-722-000107	PUMP
M7-722-000110	PUMP
M7-722-000112	PUMP
M7-722-000143	PUMP
M7-722-000153	PUMP
M7-722-000171	PUMP

Grove® is a registered trademark of Manitowoc®.

All Items listed are Metaris manufactured; OEM and reference part numbers are displayed for reference purposes only.

Metaris and Hydralex Global are not affiliated or authorized by Grove or Manitowoc.

Prices subject to change without notice.

Hydralex Global - A Recognized Global Leading Provider of High Quality Hydraulic Components



Products We Offer

- Inline Piston Pumps
- Radial Piston Pumps & Motors
- Bent Axis Piston Pumps & Motors
- Fixed Volume Vane Pumps
- Variable Volume Vane Pumps
- Gear Pumps
- Vane Motors
- Axial Piston Motors
- High Speed Motors
- Servo Motors
- Orbital Motors
- Directional Valves
- Flow Control Valves
- Pressure Control Valves
- Relief Valves
- Check Valves
- Stack Valves
- Servo Valves
- Proportional Valves
- PTOs (Power Take-offs)
- Cylinders



Hydralex Global Corporate
48175 Gratiot Ave
Chesterfield, MI 48051
Toll Free: 800.422.4279
Tel: 586.949.4240
www.hydralex.com

Hydralex Global - Michigan	Tel: 586.949.4240
Hydralex Global - Mississippi	Tel: 601.469.1987
Hydralex Global - Ontario	Tel: 416.638.6000
Hydralex Global - Washington	Tel: 253.604.0400
Hydralex Global - Tennessee	Tel: 901.794.2462

sales@ahx1.com
sales@metarisusa.com
sales@metaris.com
sales@h-r-d.com
sales@flinthydrostatics.com



Connect with us:



All manufacturers names, symbols and descriptions in this document are used for reference purposes only, and it is not implied that any parts listed is the product of these manufacturers.